

Standing Queue System

Ultra Slim

Light Weight

Saves Space

Hassle free Installation

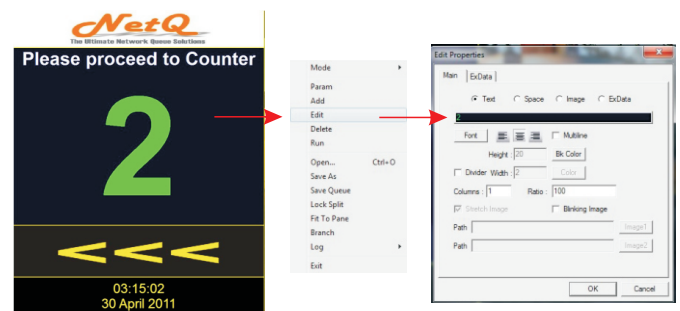


Wireless calling button to reduce unnecessary installation charges

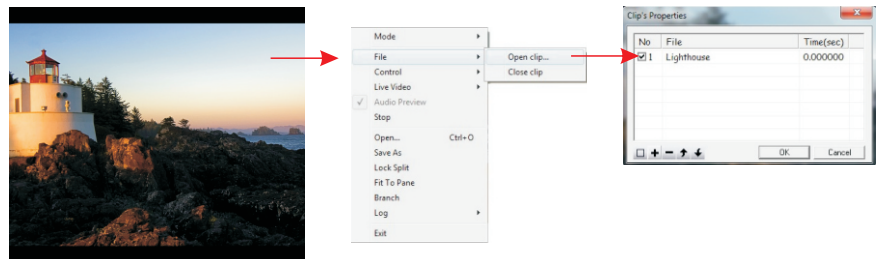
SQ01 Standing Queue System is designed for businesses with space restrictions and fast customer turn over. SQ01 is a LCD based Standing Queue System whereby it allows business owners to show the queue and also display their in-house advertisements or TV channels.

Calling of the next customer is only by a press of a button and updating of in-house advertisements can be accomplished by few mouse clicks. Displaying of contents are split into 3 screens, Left pane for the Counter Indicator, Right pane for the advertisements or TV channels and the bottom pane for running text.

On the Left Pane users have the flexibility to change the contents with ease, by pointing to the contents to change the users will just have to do a right click and make the necessary changes. No more complicated programming needed and no more long training session is necessary.



On the Right Pane users will just have to right click to bring out the playlist of the pane and add, change or remove any clips or TV settings



On the bottom pane, users will just have to right click to bring out the param to change the parameters of the running text. Users can add multiple lines of text with different colors and font types to attract the attention of customers.

seat and we will serve you shortly

